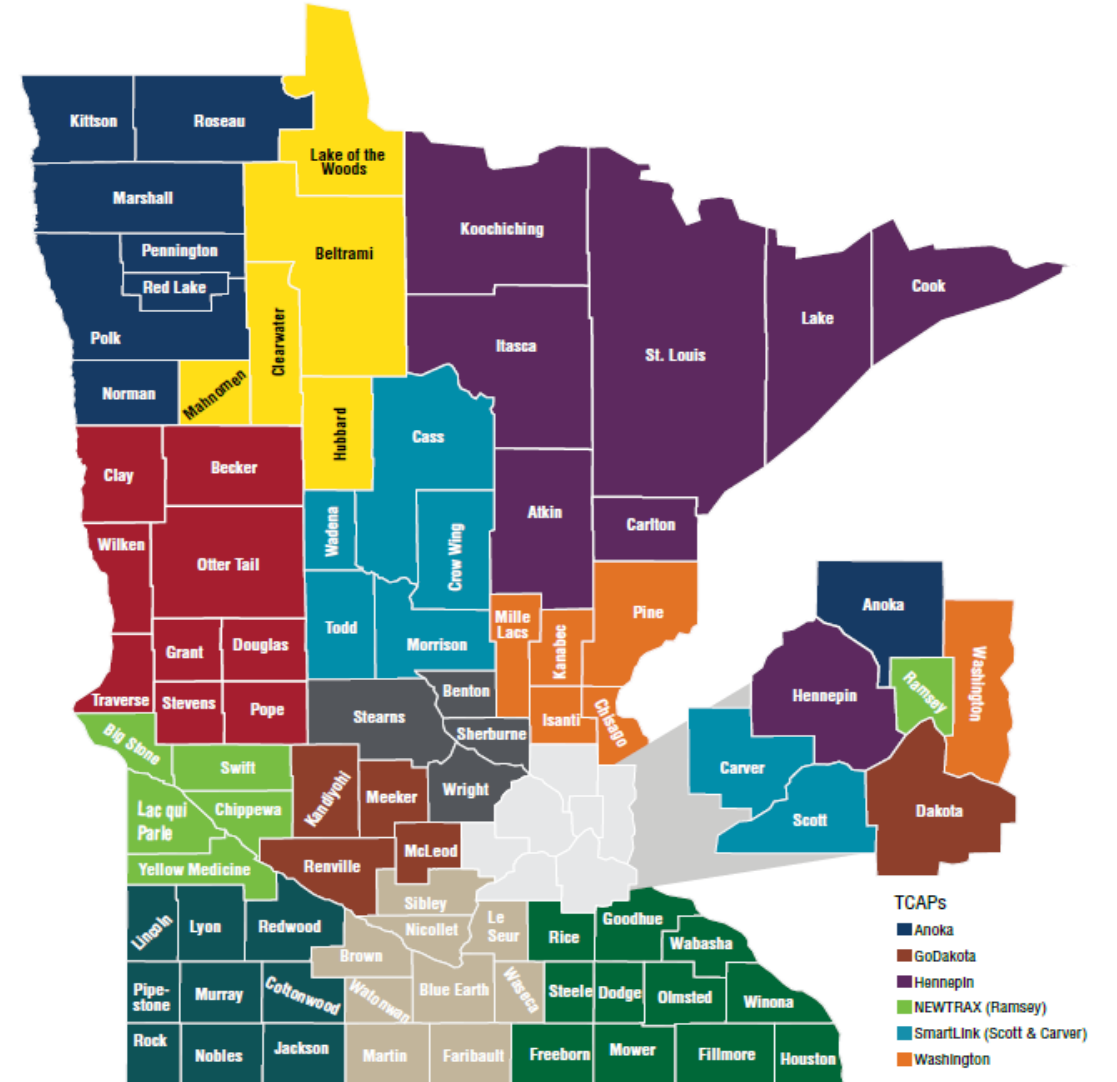


Regional Transportation Coordinating Councils

Regional Transportation Coordinating Councils & Transit Coordination Assistance Projects



LEGEND

RTCCs

- Region 4*
- Region 5
- Region 6W
- Arrowhead
- Connect Central
- East Central
- Headwaters*
- Mid-Minnesota

TCAPs

- Anoka
- GoDakota
- Hennepin
- NEWTRAX (Ramsay)
- SmartLink (Scott & Carver)
- Washington

- Northwest
- Southwest Minnesota

*(currently not active)

Sharing Vehicles:



All Greater MN RTCCs have a shared issue to resolve...



Determine potential shared opportunities, barriers and/or resolutions to build partnerships for shared transportation coordination,

...and goal to be accomplished:

to maximize utilization of existing vehicles used by organizations such as non-public providers (assisted living, churches non-profits) etc., including but not exclusively, FTA Section 5310 Providers.



Vehicle Class 300

Configurations:

- 1-2 wheelchair positions
 - 8-9 Seated passengers
- Commercial Drivers License (CDL) **may** be required
- Gas engines only
- Lifecycle: 4 years + 100,000 miles



Vehicle Class 400

Configurations:

- 1-2 wheelchair positions
 - 14 passengers max
- 3 Wheelchair positions
 - 10 passengers max
- 4 Wheelchair positions
 - 8 passengers max
- Commercial Drivers License (CDL) **may** be required
- Lifecycle: 5 years + 150,000 miles



Vehicle Class 500

Configurations:

- 2 wheelchair positions
 - 28 passengers max
- 4 wheelchair positions
 - 22 passengers max
- 4 Wheelchair positions
 - 8 passengers max
- Commercial Drivers License (CDL) **is REQUIRED**
- Lifecycle: 7 years + 250,000 miles



The Arrowhead Area RTCC summed up the process in a way that is congruous with other RTCCs throughout the state:



FOCUS: Underutilized Vehicles

1. Develop criteria to identify agency and/or community interest and capacity to explore vehicle sharing opportunities.

FOCUS: Agencies Seeking Vehicle Sharing

1. Create profiles of agencies seeking vehicles to share,
2. Arrowhead RTCC will meet with the agencies identified,
3. Connect agency to agency with underutilized vehicles.

Shared Mobility & Micro-mobility

in Rural MN...



Walkability –

- distances from residential areas to town (land use planning),
- safety issues of major highways cutting through towns.

Micro-mobility Access (bikes, scooters, Evie type sharing...) –

- accessible drop/pick up sites would be difficult because of the distances of homes to drop/pick up sites,
- currently, much of greater MN has broadband issues making scheduling/payment a problem.

First and Last Mile –

- how to get to and from a transfer station or HUB where shared mobility is available?
- not feasible for a bus to transport one person any long distance.

RideShare –

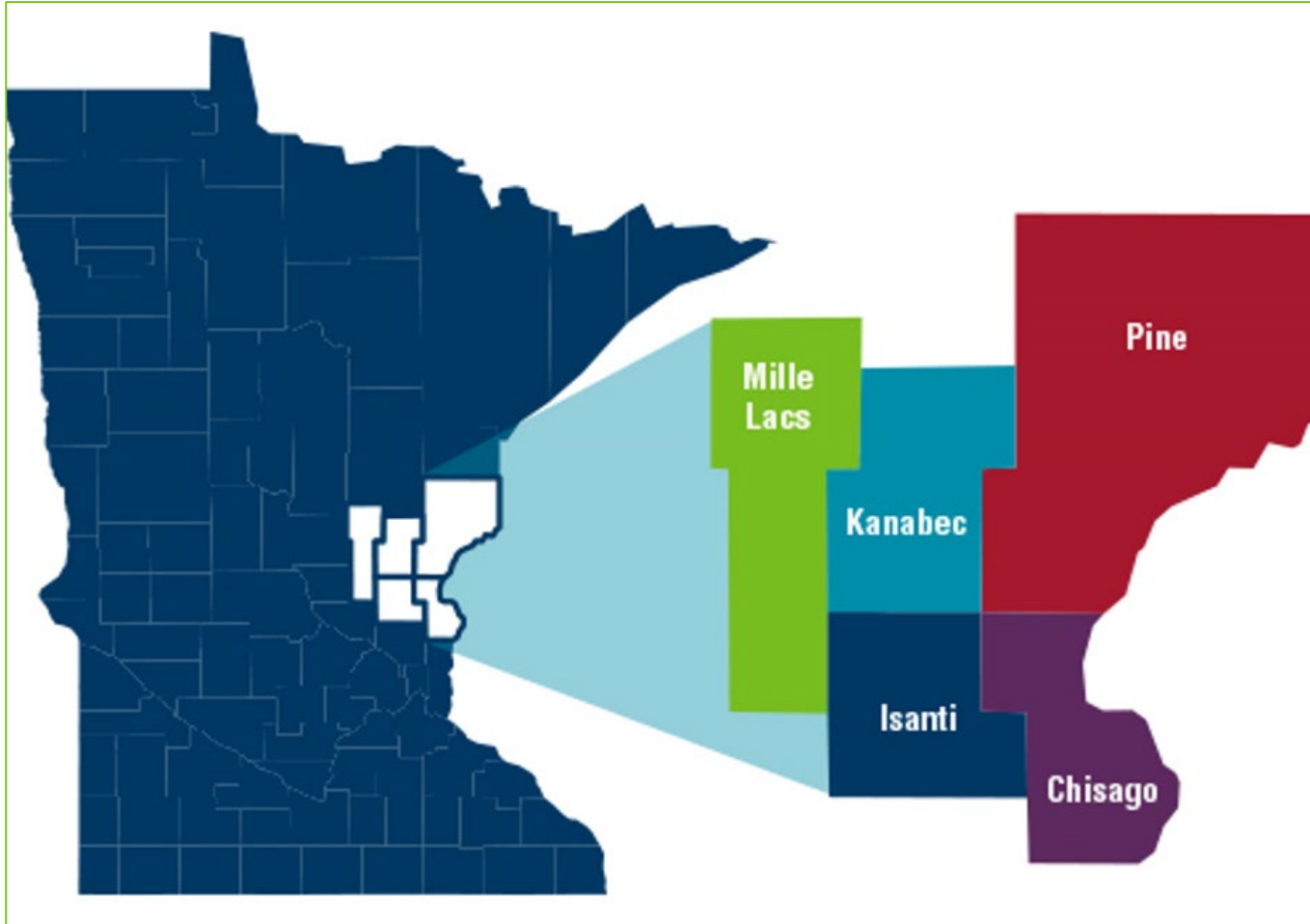
- No Uber/LYFT available in rural areas.

Local Human Services Transportation Coordination Plan 2022

Greater Minnesota Regional Transportation Coordinating Councils							
East Central MN							
Local Human Services Transit Coordination/RTCC Task Matrix							
1) List Local Human Services Transit Coordination top priorities related to mobility management in Column A							
2) Indicates with an X which task it relates/corresponds to one of the RTCC Tasks							
Local Human Services Transit Coordination Plan Priorities (List below - Column A)	Task 1: Transportation Guidance/Cons ultation	Task 2: Vehicle Sharing	Task 3: Stakeholder & Community Engagement	Task 4: Volunteer Driver	Task 5: Training and Education	Task 6: Mobility Management Integration	Task 7: MCOTA Participation
Transportation HUB Development	X	X	X	X	X	X	
Unified Multi-Regional Mobility Management Coordination	X	X	X	X	X	X	X
Identify First/Last Mile rider's issues - (housing consideration includes transportation)	X	X	X	X	X	X	X
Prepare infrastructure to facilitate the induction of RideShare Programs	X	X	X	X	X	X	X
Regulation Monitoring - insurance, procedures, FTA, IRS, State, etc.		X		X	X	X	X
Monitor FTA's restriction on purchase of small vans utilizing 5310 funds		X		X	X	X	X
Monitor alignment of countywide broadband infrastructure (re: transportation)	X	X	X		X	X	
Monitor "Universal Payment Structure" & MaaS in region (with expansion in mind)		X	X		X	X	X
Vehicle Maintenance & Vehicle Donation Programs	X	X	X	X	X	X	
Travel Training (access training for volunteer drivers and public transit service riders)	X		X	X	X	X	
Transportation support in EMS Preparedness Planning		X	X	X	X	X	

East Central

Chisago, Kanabec, Isanti, Mille Lacs, Pine Counties



Contact: Karen Onan or Michelle Thomas
East Central Regional Development
Commission

karen.onan@ecrdc.org

michelle.Thomas@ecrdc.org

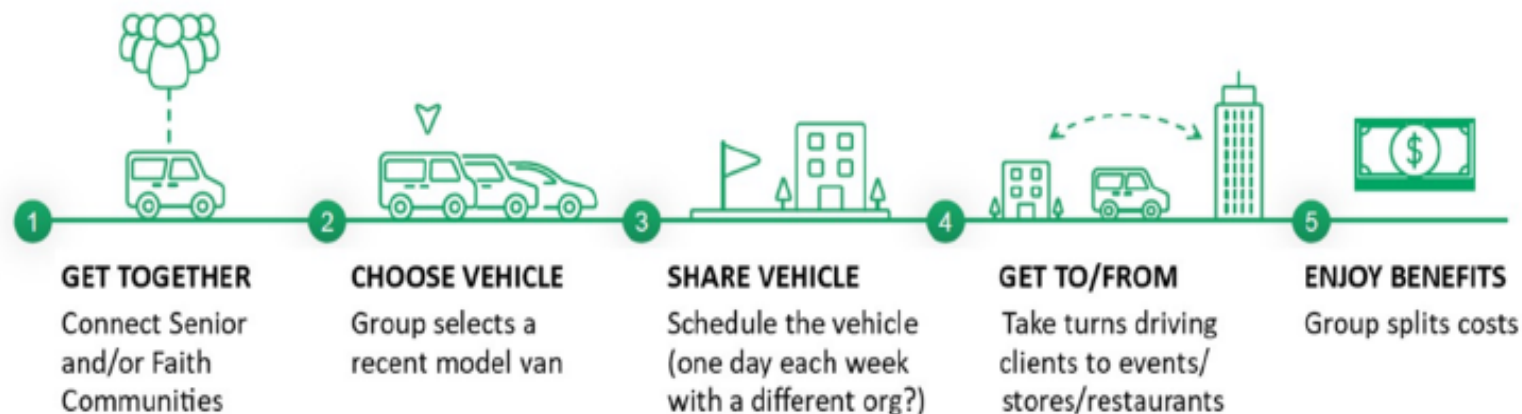
Enterprise Car Rental

“Enterprise Commute”

Sharing a vehicle for employment, travel for senior facilities or transportation for other organizations

OUT AND ABOUT FOR HEALTH, WELLNESS & WELL BEING

A Shared Vehicle Transport Pilot Project being vetted to combat transportation barriers facing older adults living in East Central Minnesota



WHAT IS INCLUDED:

✓ RECENT-MODEL SUV, CROSSOVER OR VAN WITH OPTIONAL AMENITIES

✓ 24/7 ROADSIDE ASSISTANCE
✓ PREVENTATIVE MAINTENANCE

✓ COMPREHENSIVE PHYSICAL AND LIABILITY INSURANCE
✓ MONTH-TO-MONTH FLEXIBILITY

Northern Lights Express Passenger Rail Line

<https://northernlightsexpress.org/>

<https://northernlightsexpress.org/future-stations>

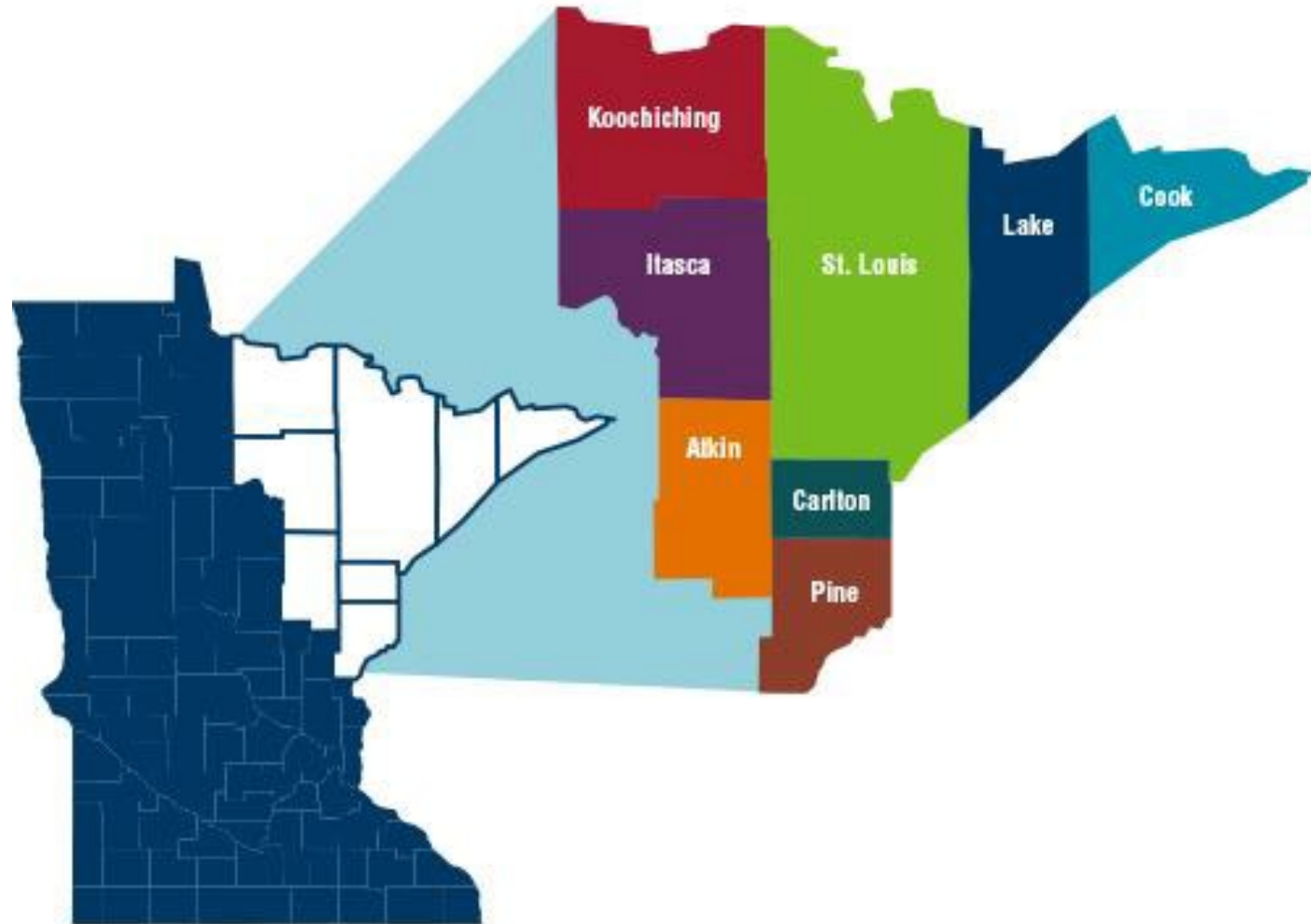
Trail accessibility from NLX Stations/HUBS (transfer hubs) - Cambridge and Hinckley, *Duluth and Superior* *.

These Stations will not just be available to access the great MN trails but it will offer other mobility modes including volunteer drivers, rental cars, taxis, RideShare and Public Transit.



Arrowhead

Aitkin, Carlton, Cook, Itasca, Koochiching, Lake, Pine, St. Louis Counties



Contact: Beverly Sidlo-Tolliver, Arrowhead
Regional Development Commission

bsidlotolliver@ardc.org

9

<https://www.arrowheadrtcc.org/>

SUCCESS STORIES:

- The ARTCC Vehicle Sharing Subcommittee researched and identified the critical issues related to vehicle sharing and implemented guidance from a successful vehicle sharing program organized by the Maricopa Association of Governments (MAG) in Phoenix, Arizona.
- The Arrowhead RTCC vehicle sharing subcommittee explored existing information and resources to begin development of documents needed to share vehicles between agencies.
- In late 2019, the subcommittee partnered with Arrowhead Area Agency on Aging to identify underutilized vehicles in the region and developed a directory to connect agencies for vehicle sharing opportunities.
- The conversations and cooperation of the vehicle sharing subcommittee led to a successful vehicle sharing partnership between Udac and Essentia Health. Between January 1, 2020 and July 31, 2020 - A total of 6,300 COVID vaccines were administered by the Essentia Health Mobile Vaccine Teams based out of Duluth and Fargo. The mobile teams administered vaccines in community centers, churches, schools, worksites and at community events across the Essentia service area - with an intention to increase access and remove barriers for "Communities of Focus".
- In the early months of 2023, the Arrowhead RTCC facilitated cross-agency use of a vehicle with Big Woods Transit (Leech Lake) and Falls Hunger Coalition (International Falls, Koochiching County). This collaboration was featured in the March edition of the MCOTA newsletter.



- About Us ▾
- Regional Coordination ▾
- News ▾
- Meetings and Events ▾
- Providers ▾
- Resources ▾

Home > Arrowhead RTCC facilitates vehicle-sharing among community agencies to expand capacity and resources

Arrowhead RTCC facilitates vehicle-sharing among community agencies to expand capacity and resources

March 15, 2023



“Sharing vehicles maximizes the use of a vehicle in service to a population,” said Karen Herman, executive director of Udac Inc., a Duluth-based nonprofit that assists individuals with disabilities through employment and civic life to advance community inclusion. “Transportation is one of the biggest — if not the biggest — barrier to community participation and access to resources. Multiple organizations using vehicles helps address these issues.”

The structure and coordination provided by the Arrowhead RTCC made it possible to take the idea and turn it into a ride-sharing project.

“The RTCC sets the foundation for coordination by cultivating buy-in,” said Beverly Sidlo-Tolliver, Arrowhead RTCC mobility manager. “One of the intentions of the RTCC is to break past the long-standing silos and identify the incentives to make changes and work with different stakeholders.”



Arrowhead RTCC - Building New Programs

Wii-doo-kaa-ge (Helping Others)

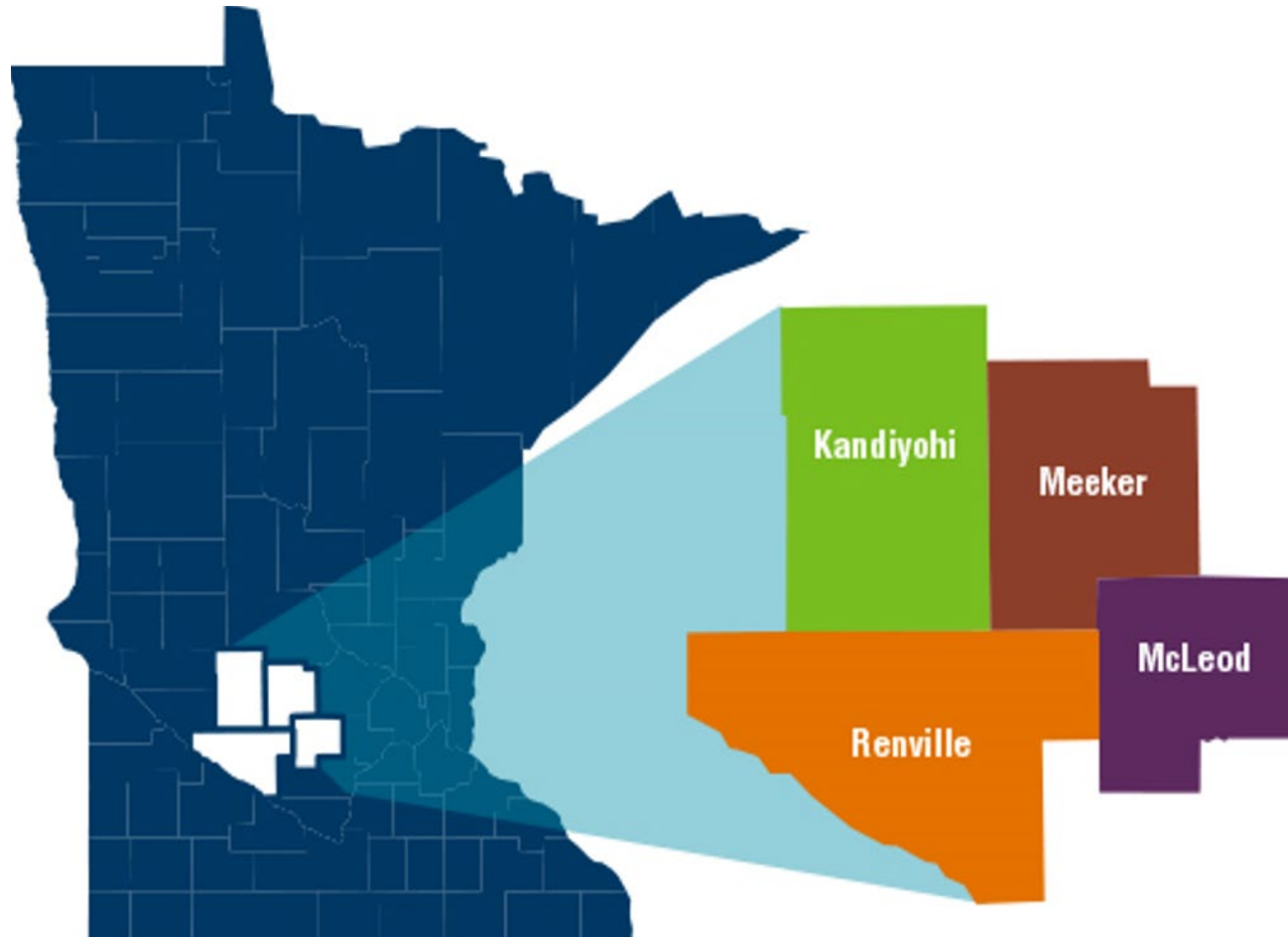
Non-Emergency Medical Transportation (NEMT) Bois
Forte/Big Woods Transit

- The idea started watching families struggle to transport family members to the only dialysis clinic which is located 65 miles away, 130-mile round trip,
- NEMT rides not being fulfilled,
- Vehicle Sharing Program has 4 mini vans each with one wheelchair position,
- Robust Volunteer Driver Program with partnerships cultivated through the RTCC,
- Received 3-\$5,000 grants from Arrowhead Agency on Aging.



Mid-Minnesota

Kandiyohi, McLeod, Meeker, Renville Counties



Contact: Terry Smith,
Mid-Minnesota Regional Development
Commission

terry.smith@mrrdc.org

<https://mrrdc.org/transportation-planning/ride-resources/>

Free Farmer's Market Shuttle





Senior Transportation

VOLUNTEER DRIVERS

MMD

Ride Resources
Volunteer Driver

CCT
CENTRAL COMMUNITY

Minnesota's Regional
Transportation
Coordinating Council
Improving Mobility
Options For ALL
M:RCC M:RCC

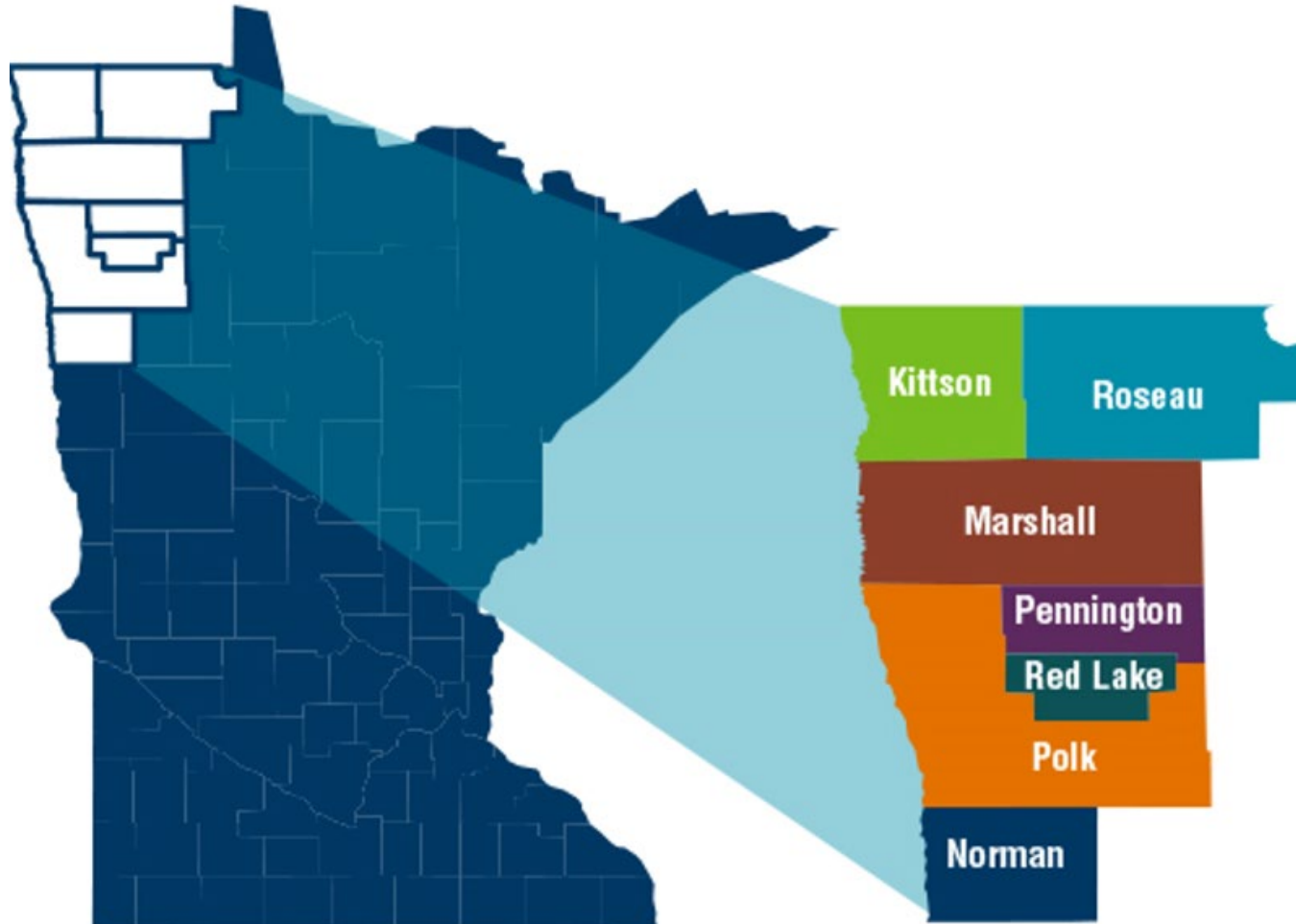
Fat-tire two-passenger trike

The MMRTCC's exploration of shared micro-mobility has included the creation of a video to promote [BikeWillmar](#), which has 40 bikes and 11 docking stations.



Northwest

Kittson, Marshall, Norman, Pennington, Polk, Red Lake, Roseau Counties



Contact: Lynnell Simonsen-Popowski,
Northwest Regional Development
Commission

lynnell@nwrdc.org

<https://www.nwrtcc.org>

Northwest

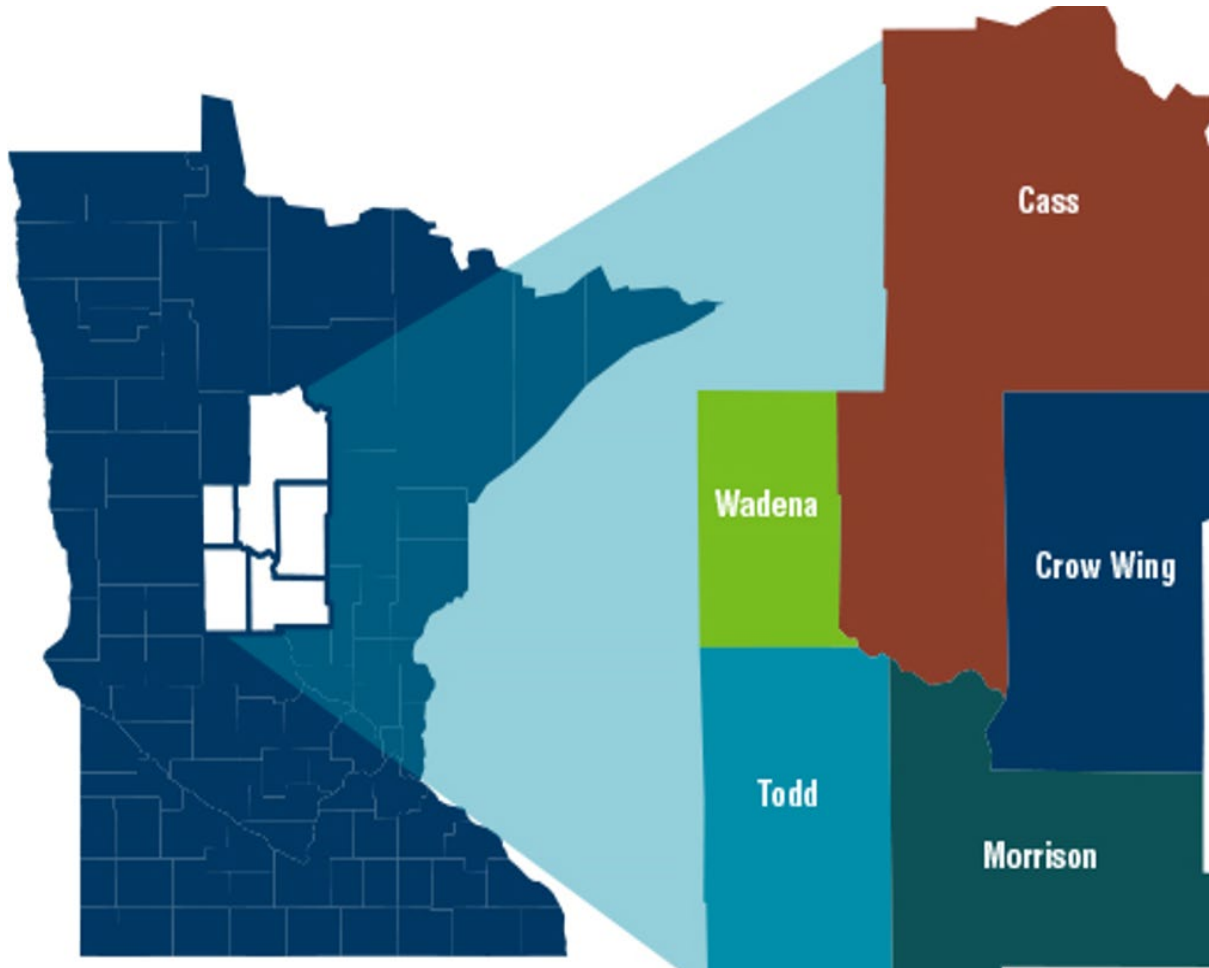


- Maintains a list of the MnDOT 5310 program vehicles in use in the region.
- Working with the Warroad Senior Living Center to develop a system to share their accessible vans with the local community residents.
- There is a system in place to train volunteers to drive their accessible vans that could, theoretically, be used to transport residents of the community.
- To date, seven volunteers have been trained but they have only used the vans to transport residents of the senior living facility, not any outside community members. But the potential is there. The Senior Living Center social work staff currently is overwhelmed and simply does not have the capacity to manage this effort. They also have a Tri-shaw they have not trained anyone to use, as-of-yet.

MCOTA (MN Council on Transportation Access) has a Removing Barriers work team that Lynnell serves on. At this time, they are creating a one-page white-paper to help clarify insurance and liability questions for the process of sharing vehicles.

Region 5

Cass, Crow Wing, Morrison, Todd, Wadena Counties



Contact: Tad Erickson, Senior Transportation
Planner

Region 5 Development Commission
terickson@regionfive.org

<https://www.regionfive.org/rtcc>

- Shared van service funded with 5310 dollars
- Shared mobility scheduling platform
- Changes in land use planning
- Promoting cycling and walking

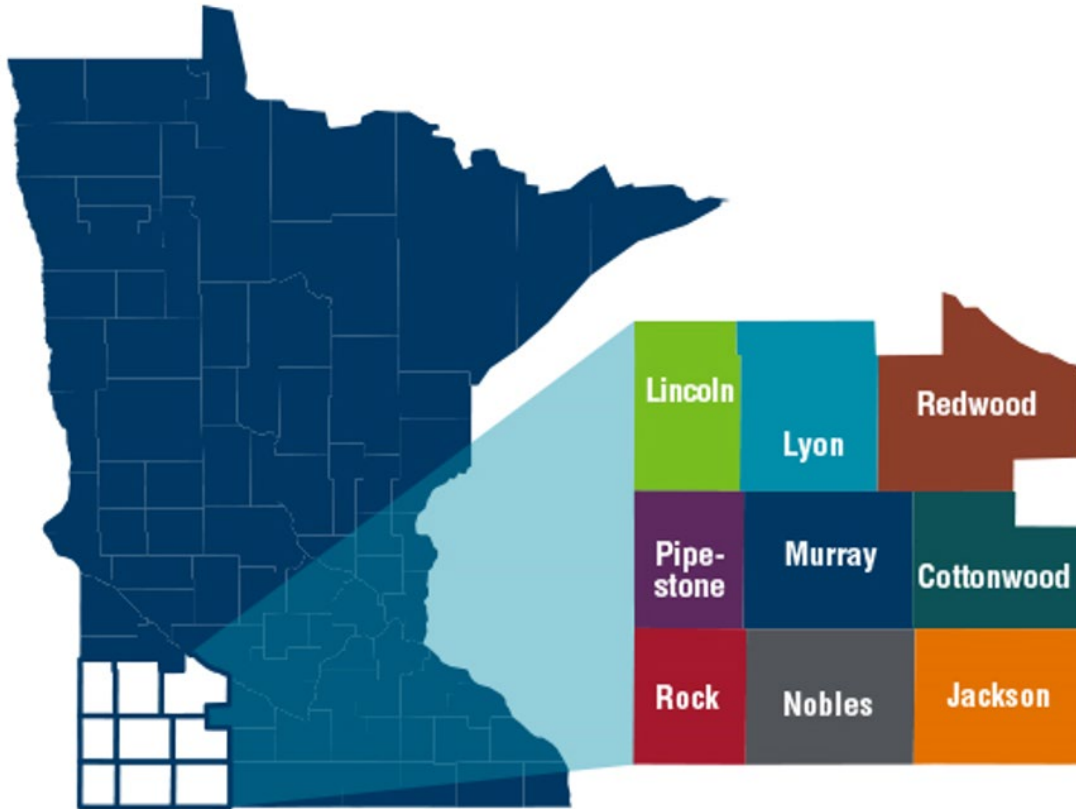


Vehicle Sharing

- identify potential sharing opportunities of existing vehicles throughout the region.
- identify available vehicles in the region by contacting transportation providers in the region and from there
- reach out to the residents in the region to identify what need exists.
- The need will be identified through surveys of transportation organizations to inquire on what gaps may exist and how a potentially shared vehicle could fill those gaps.
- R5RTCC will also be looking at the possibility of an intercounty transit vehicle and/or route sharing program.
 - Successful implementation will include identifying priority routes, estimating the cost, and identifying funding sources.
 - Traveling from County to County can be a challenging task in rural Minnesota and this is one way the R5RTCC has identified to tackle the issue.

Southwest

Cottonwood, Jackson, Lincoln, Murray, Nobles, Pipestone, Redwood, Rock Counties

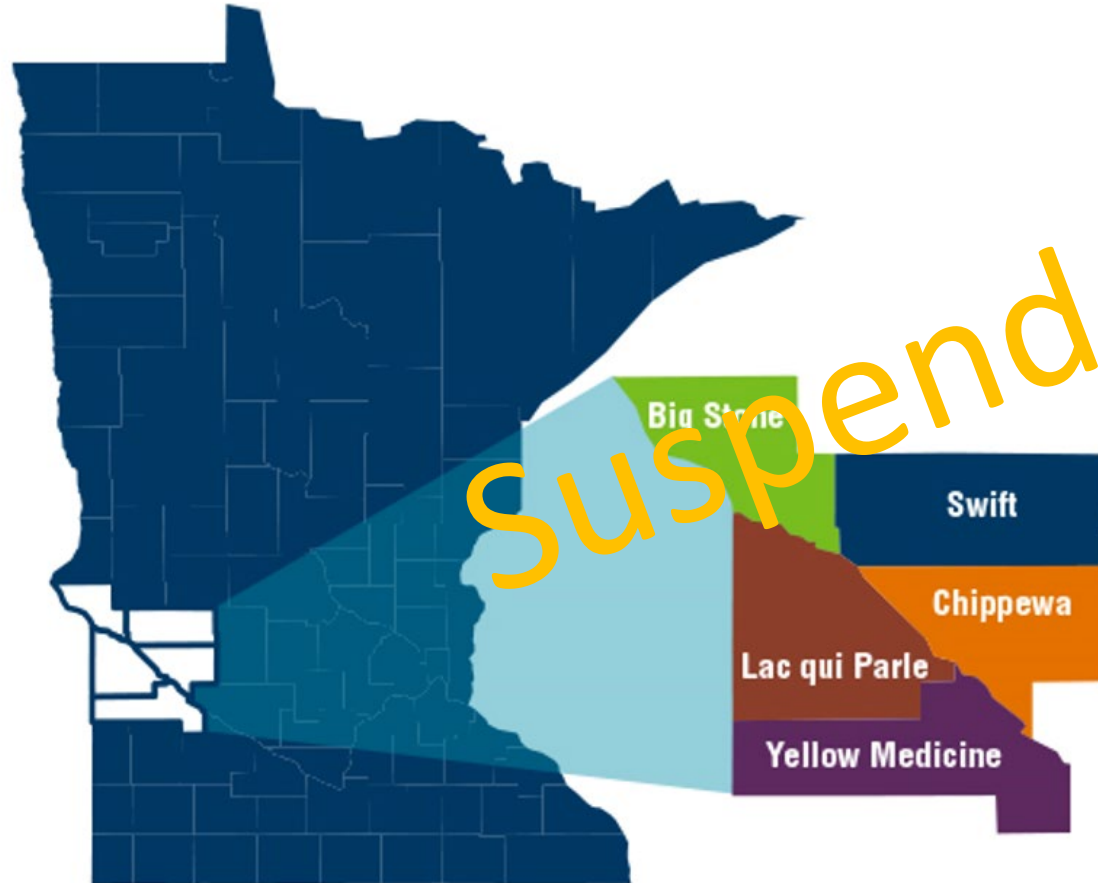


Contact: Shelly Pflaum
United Community Action Partnership
shelly.pflaum@unitedcapmn.org

<https://www.unitedcapmn.org/services/transportation-program/rtcc/>

Prairie 5

Big Stone, Chippewa, La qui Parle, Swift, Yellow Medicine Counties

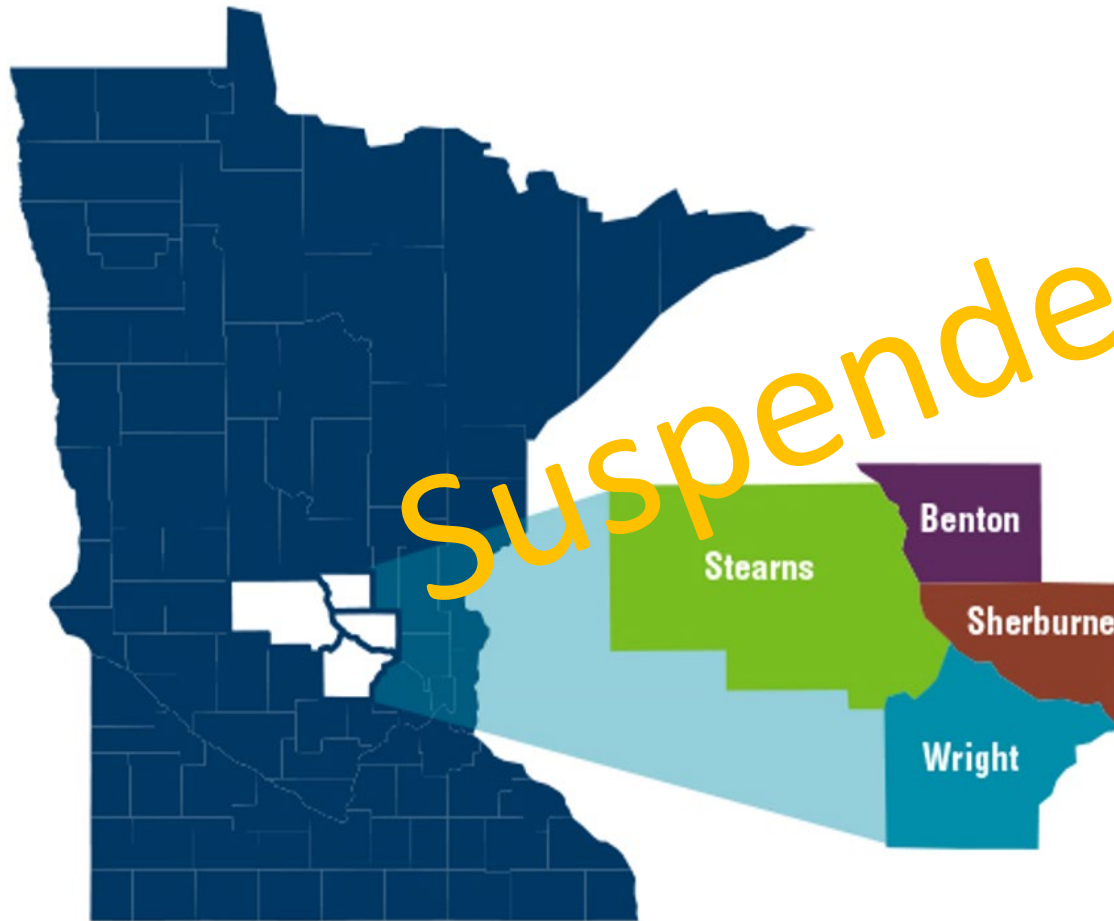


Contact: Ted Nelson,
Prairie 5 Community Action
ted.nelson@prairiefive.org

<https://prairiefive.org/online-provider-finder/>

Connect Central MN

Benton, Sherburne, Stearns, Wright, Mille Lacs Counties



Contact: Sheri Wegner

ConnectAbility

Sheri.Wegner@ConnectAbilityMN.org

East Central Regional Transportation Coordinating Council

Karen Onan,
Senior Planner – ECRTCC Coordinator
East Central Regional Development Commission

Karen.Onan@ecrdc.org

612-269-4090

Michelle Thomas,
Economic Development Coordinator,
ECRTCC Coordinator
East Central Regional Development Commission

Michelle.Thomas@ecrdc.org

612-390-0370

Thank
You

